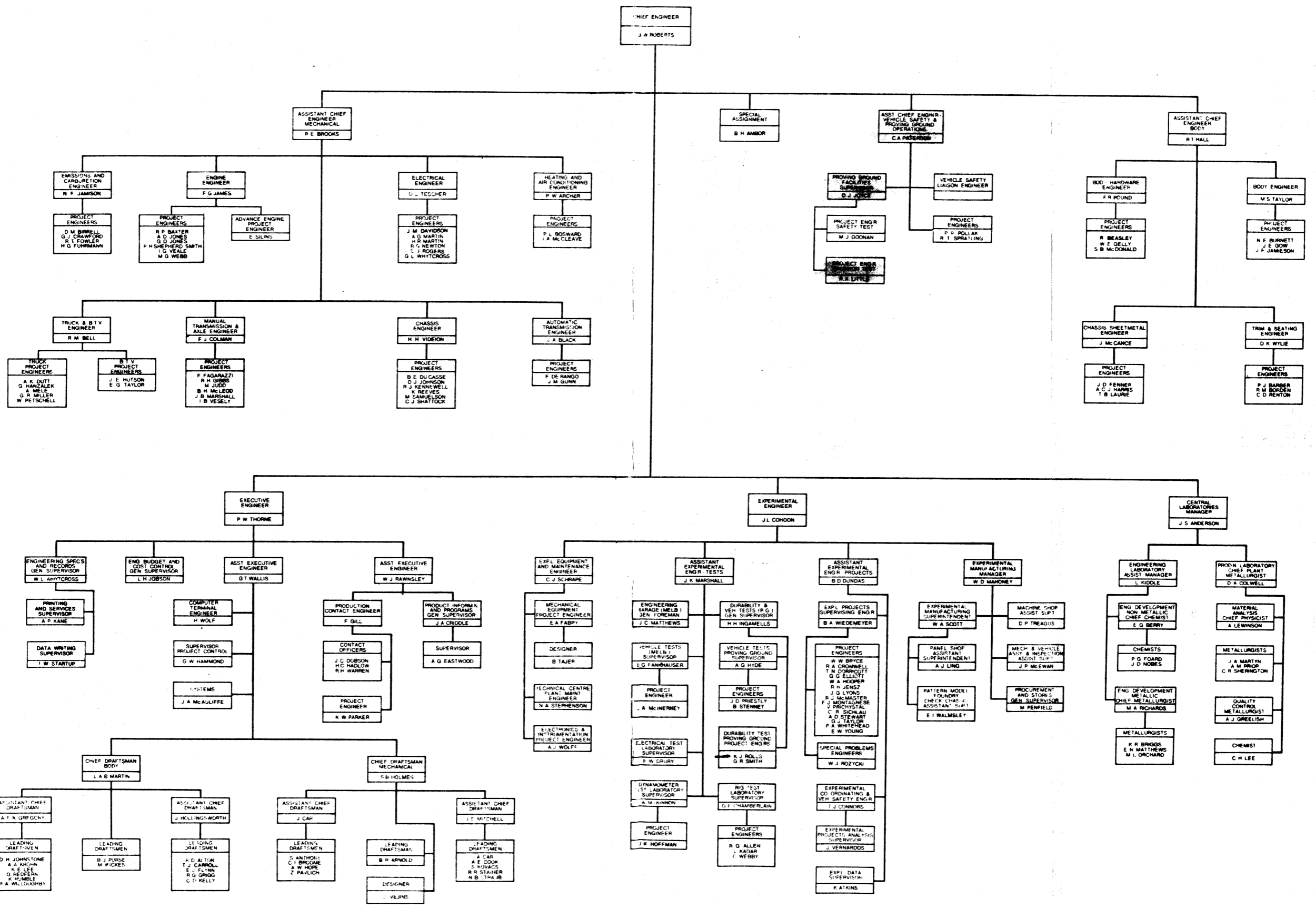


GENERAL MOTORS HOLDINGS PTY. LTD
ENGINEERING DEPARTMENT



ASSISTANT EXP. ENGINEER
PROVING GROUND
C.J. SHATTOCK

STAFF
D. ROBINSON (MRS)

SUPERVISOR P.S.
FACILITIES
D.J. JOYCE

SUPERVISOR P.S.
VEHICLE TEST
J.V. HOFFMAN

SUPERVISOR P.S.
DURABILITY TEST
F.W. INGATELLS

SUPERVISOR P.S.
EMISSIONS TESTS
R.A. LITTLE

SUPERVISOR P.S.
SAFETY TEST
H.J. GOONAN

EN
NA (MRS)
RT
ORS
HARD
N

MAINTENANCE
H. GROEN LH
G. THOMAS
R. SMITH
C. BROWN
W. HOOKER
C. JONES
P. WHEATLEY
L. STILES

VEHICLE TEST OPERATORS
D. HORSBURGH LH
M. TURNER
W. HOWIE
R. JOHNSTON
K. BLENCOWE
B. GRASSICK
C. MILNER
S. HORAN
D. OSMOND

VEHICLE TEST ENGINEERS
J. PRIESTLY
R. BORRIT

TECHNICAL OFFICER
A. MORPHETT

SUPERVISOR DURABILITY DATA
J.L. ALLAN

TECHNICIANS
R. KEMP

STENOGRAPHER
B. GRIGGS (MRS)

DURABILITY TEST ENGINEER
G.R. SMITH

STORES CLERKS
J. ANDERSON

DURABILITY TEST ENGINEERS
K. ROLLS

SHIFT FOREMAN SAFETY & EMISSIONS TESTS
F. CHIGNIDDEN

MOTOR MECHANICS
P. PENDER
H. GRIEVE

FOREMAN SAFETY & EMISSIONS TEST
H. BAUER

MOTOR MECHANICS
S. CORBETT LH
K. DUFF
D. WEALANDS
A. FORD
I. MURR
P. DONOVAN

INSTRUMENT
D. MARRI
D. ALLIS

DRIVER FOREMAN (SHIFT 1)
A. GEORGE

DRIVER FOREMAN (SHIFT 2)
R. SAUNDERS

DRIVER FOREMAN (SHIFT 3)
H. WALKER

FOREMAN DURABILITY GARAGE
R. SMALES

TY DRIVERS
ATLEY LH
ATLEY
STER
HESON
ER
IDGE
ON
TLE
LEY
RINGTON
DON
RCE
EY

MOTOR MECHANICS
R. HANSON
W. ROBERTS
J. LORD

DURABILITY DRIVERS
D. ROBINSON LH
L. STAPLETON
V. HALLAS
M. HART
W. SMITH
R. MCKENZIE
H. ELLWOOD
P. LANIGAN
G. TURNER
G. STUPACK

GARAGE ATTENDANT
N. SMITH

DURABILITY DRIVERS
E. POWER LH
R. MCRAE
J. PRIDE
J. WILTSHIRE
J. BUXTON
J. BALLARD
J. BALLARD
K. MCDRIDE
A. HICKS

MOTOR MECHANICS
P. CURTIN
L. SKINNER
T. WILSON

STOREMAN
B. DOWELL

TRANSPORT DRIVERS
G. CARVOSSO

MOTOR MECHANICS
R. BEAMAN LH
W. EDWARDS
E. YOUNG
D. CAMERON
G. DUNCAN
V. HEWETT
G. HUGHES
F. ACHTERDENB
J. ROWELL
J. SPENCER
R. STEWART

36
16
52